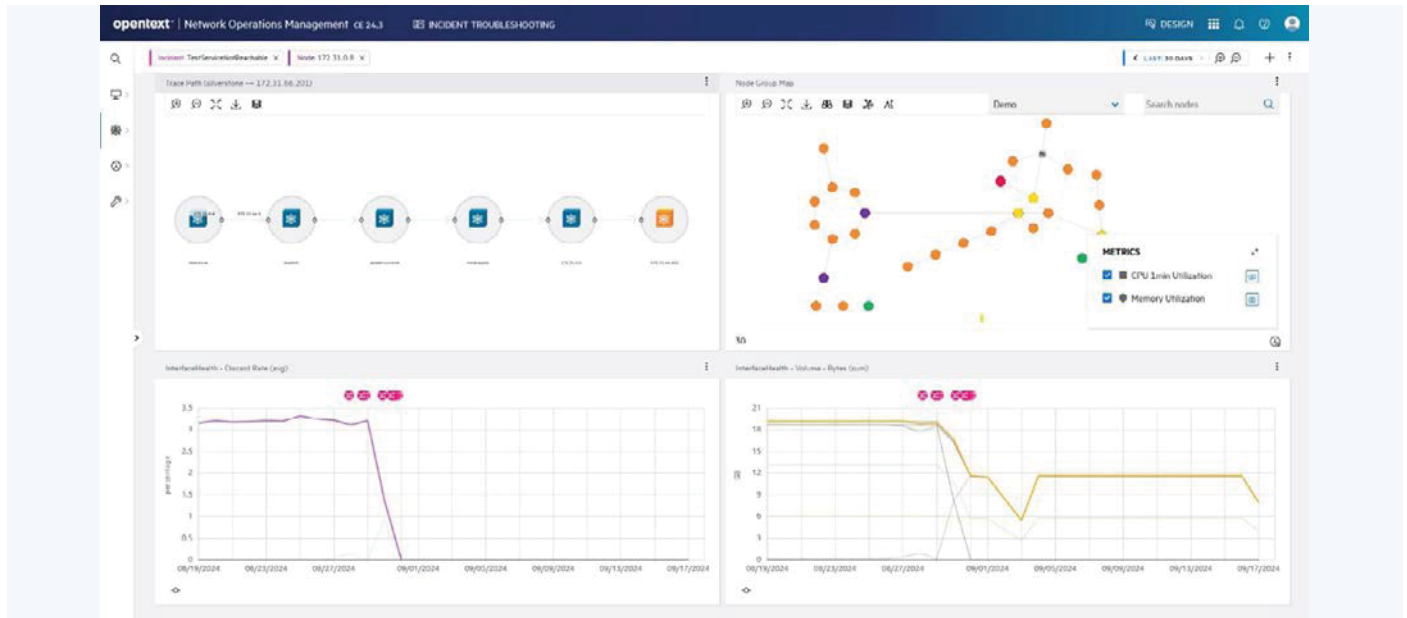


OpenText Network Operations Management

A unified approach to modern network operations and management with comprehensive visibility, optimization, and automation for ultimate performance and compliance



Benefits

- Have unified visibility across physical, virtual, and SDN networks
- Monitor changes in real time to reduce downtime and errors
- Enhance security by proactively detecting and resolving issues
- Increase efficiency with automated configuration and compliance

As modern networks become more dynamic and complex, organizations need more than just basic monitoring—they require true network observability. OpenText™ Network Operations Management is unique in offering real-time change monitoring and dynamic topology mapping to deliver comprehensive visibility, performance optimization, and automation for physical, virtual, and SDN environments. OpenText Network Operations Management empowers network operations and engineering teams to respond to issues faster and with greater accuracy, ensuring continuous availability, security, and compliance.

Complete visibility for modern networks

OpenText Network Operations Management provides a unified view across physical, virtual, wireless, and SDN networks, supporting more than 3,500 device types from more than 200 vendors. With its realtime topology mapping capabilities, including patented Spiral Discovery, the solution keeps your network view up to date, helping to identify any non-compliant devices and ensuring your network remains secure.

Real-time change monitoring for proactive network management

OpenText Network Operations Management's ability to monitor network changes across multiple dimensions provides real-time insights into the live



Connect with MFGS, Inc.,
the exclusive master supplier
of OpenText (legacy Micro
Focus) products to the DOD
and IC.



Learn more at mfgsinc.com

OpenText Network Operations Management deployment options:

Extend your team

- On-premises software, managed by your organization or OpenText, with select components available via SaaS.

Resources

[Learn more ›](#)

[Get a free demo ›](#)

state of your network. By capturing and overlaying configuration changes alongside performance data, it helps you quickly diagnose and resolve performance issues. Compare current and previous device states, detect unsaved changes, and roll back configurations when necessary, ensuring your network remains compliant and operational.

Optimize network performance and capacity

As businesses transition to more dynamic and agile technologies, managing performance and capacity becomes critical. OpenText Network Operations Management provides deep insights into network health, performance, and compliance, allowing teams to address bottlenecks before they impact business services. Automation features further reduce the time spent on manual tasks, optimizing the performance of mission-critical applications.

Automate for greater efficiency

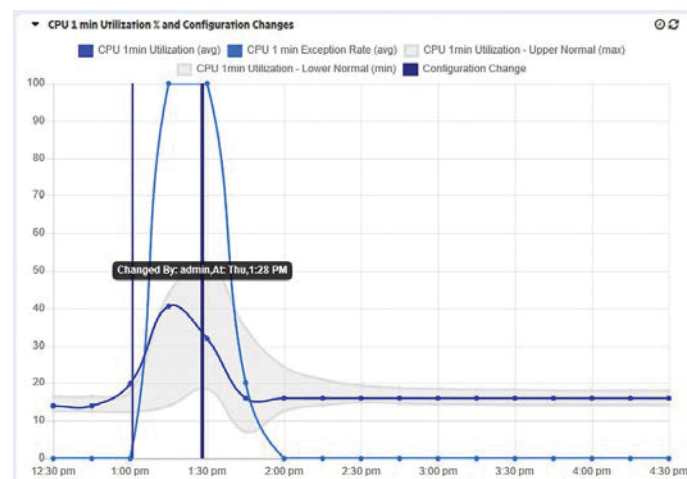
OpenText Network Operations Management's advanced automation features reduce manual intervention and enable rapid deployment of network services. Policy-driven configuration management detects and remediates violations, ensuring your network remains compliant with regulatory and organizational standards. Its orchestration capabilities extend across traditional and virtual networks, streamlining operations and ensuring consistent configurations.

Automate for greater efficiency

OpenText Network Operations Management's advanced automation features reduce manual intervention and enable rapid deployment of network services. Policy-driven configuration management detects and remediates violations, ensuring your network remains compliant with regulatory and organizational standards. Its orchestration capabilities extend across traditional and virtual networks, streamlining operations and ensuring consistent configurations.

Manage complex network environments

OpenText Network Operations Management delivers the unified, scalable solution needed to manage today's complex network environments. Its powerful combination of real-time change monitoring and automated compliance ensures that network teams can quickly identify and resolve issues while maintaining security and performance.



Automatic configuration change and performance correlation